

# **RPM**

## **Bluetooth Receiver**

**cerwin**  
**vega**  
*mobile*



**CUBTR7/BTR10/BTR12**

# **USER MANUAL**

## Cerwin Vega Mobile Products:

Thank you for purchasing a Cerwin Vega Mobile product for your mobile audio system. You have chosen Cerwin Vega Mobile because you deserve the best!

Cerwin Vega Mobile products are designed and engineered to the highest quality standards in the industry to create the ultimate listening experience in your vehicle. For optimal performance of this product, it is highly recommended that you have it installed by an authorized Cerwin-Vega Mobile dealer.

Our authorized dealers have the necessary experience and installation equipment to ensure that your amplifier will deliver maximum performance and explain all the details pertaining to our warranty coverage as well.

If you decide to install the product by yourself, please thoroughly read through this manual before getting installed. This manual will help familiarize yourself with this Bluetooth receiver and guide you through the installation process and procedures.

Please contact your local authorized Cerwin Vega Mobile dealer if you have any questions regarding the instructions in this manual or the products operational capabilities. If you require additional assistance, please contact the Cerwin-Vega Mobile Technical Support Department during business hours (PST) at 213-261-4161.

## **BTR7/10/12: SUPPLIED HARDWARE PARTS**

- 3 - #6 pan head stainless steel screws – 5/8" long
- 1 – Front mount adapter ring with rubber grommet (BTR7 ONLY)
- 2 – Rubber grommets for sealed flush/dash mount installation
- 1 – Universal Adapter Harness for use with any amp
- 1 – Mounting Nut
- 1 – 12' Micro Port Cable

## Pairing Bluetooth® Device

- Go to settings on your phone and place Bluetooth® setting into "discoverable" mode.
- Search for (CVMBTR7/10/12) device.
- On phone select (CVMBTR7/10/12) to pair device.
- Once a device is paired each time this device is seen by the CVBTR7/10/12 it will automatically reconnect to the device. If no device is present the CVBTR7/10/12 automatically goes into pairing mode and will present itself as discoverable for the device present. next

## Ignition/ Remote In / Remote Out Connection

- Connect the Red wire (Ignition) to the ignition switch, or other devices that control for the audio system. ON/OFF

When CVBTR7/10/12 is used in this manner the ON/OFF switching built into the device is by-passed and will not function. Unit will be turned ON/OFF via the ignition switch or auxiliary switch. Connect the BTR cable with CVM amplifier products. . . then there is No need to connect any wiring to the remote turn-on. But you MUST turn ON and OFF the BTR controller (and amplifier) by holding the knob (or center button) in for 3 seconds.

- To turn on the amplifier with the Universal Adapter - Connect the blue wire (Remote Out) to the amplifier remote in to turn the amplifier ON/OFF via the CVBTR7/10/12. When  
you press the knob and hold it for longer than 3 seconds the CVBTR7/10/12 will turn ON or OFF and will also turn the amplifier ON or OFF. turn ON

## AUX Input

- Connect AUX Input with any media player (MP3 player, SmartPhone, Headunit)
- Double tap control knob rapidly to switch between Bluetooth® source and AUX source. input
- When CVBTR7/10/12 is switched to AUX input source ,the yellow LED stays on.

### Operation Guide

Turn On and Off	Press and Hold
Play music	Tap knob once
Pause music	Tap knob once to pause, tap again to resume playing
Skip one track forward	Turn the knob clockwise
Skip one track back	Turn the knob counter-clockwise
Adjust volume up	Turn and Hold the knob clockwise
Adjust volume down	Turn and Hold the knob counter-clockwise
Switch between Bluetooth and auxiliary input	Double Tap Yellow LED

## Bluetooth Trouble Shooting Guide

- Make sure volume is up on Bluetooth sources
- Confirm Pairing if no sound.
- If using the red power wire you bypass the ON Off function

## Button Function Guide

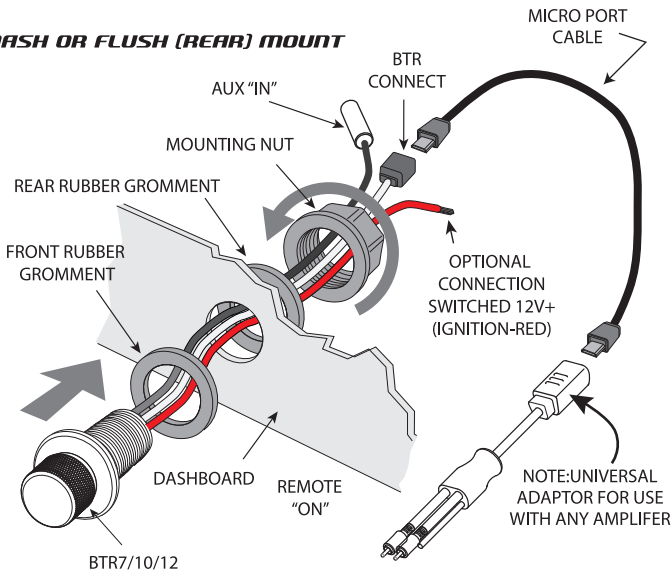
Instruction	Duration
Tap	Press once briefly
Turn	Turn knob once briefly
Turn and Hold	Turn knob and hold it for 3 seconds
Press and Hold	Press the knob and keep it pressed in for 3 seconds

## Mounting

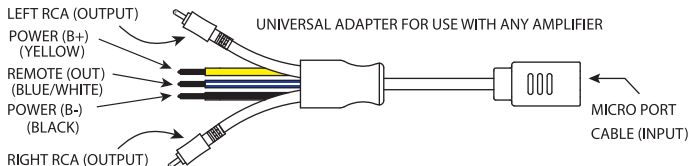
### Rear Flush Mount Instructions

- Drill a 1 1/8" (30mm) diameter hole.
- Unscrew the locking nut on the back of the device.
- Slide the device through the hole and screw the nut on the back side.
- The orientation of the unit can be adjusted in either of the mounting positions simply by loosening the unit at the back and rotating the device.

### DASH OR FLUSH (REAR) MOUNT



# Installation



## front Flush mount Instructions:

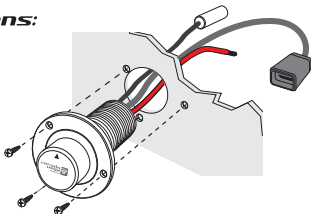
- Drill a 1 1/8" (30mm) diameter hole.
- Feed cable through the hole from the front.
- Place the unit into the hole and use three #6 pan head stainless steel screws to secure

## Note:

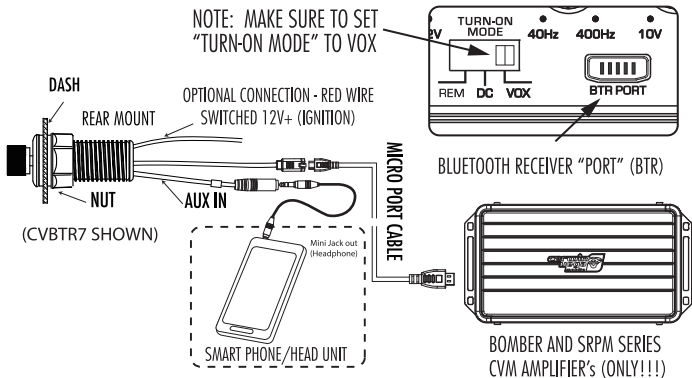
- Never attempt to open, repair, or modify any part of the unit doing so will void all warranty.

## Turning Unit ON and OFF (Universal Adaptor Harness)

- Connect Yellow wire (Power+12v) and black wire (Ground-12v) wire to power and ground securely.
- Press the control knob and hold it for over 3 seconds until you see the blue LED light goes out (OFF) or stays lit for (ON)



## Utilizing the BTR port and cable (for CUM Amplifiers)



# Typical CVM System

## BS4- FULL MARINE/HOT ROD SYSTEM WITH CUBTR7/10 OR 12

**NOTE:**  
 WHEN USING  
 BOMBER OR SRPM  
 CERWIN-VEGA MOBILE  
 AMPLIFIERS THERE  
 IS NO NEED TO USE THE  
 UNIVERSAL ADAPTOR.  
 ONLY CONNECT THE SUPPLIED  
 SPECIAL BTR CABLE INTO  
 THOSE SERIES OF AMPLIFIERS  
 .....AND THATS IT!!!

SMARTPHONE  
 (BLUETOOTH)



CVBTR7  
 (OR ANY CVM  
 BLUETOOTH RECEIVER)



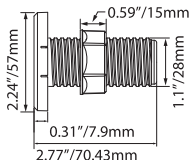
SPECIAL "MICRO PORT" CABLE  
 (INCLUDED WITH BTR)

B54 SIGNAL ENDPLATE

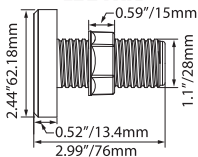


### PHYSICAL DIMENSIONS OF BTR CONTROLLERS

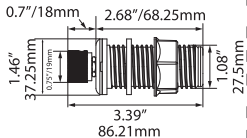
#### CUBTR12



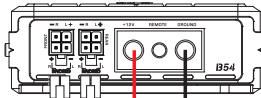
#### CUBTR10



#### BTR7



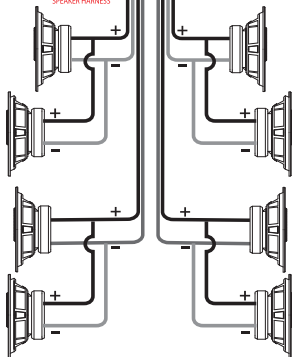
B54 POWER/SPEAKER ENDPLATE



BATTERY



FRONT OUTPUT  
 SPEAKER HARNESS  
 REAR OUTPUT  
 SPEAKER HARNESS



8 - 8 INCH VM8/SM8  
 EXTREME HIGH OUTPUT  
 3-WAY SPEAKER  
 (2 OHMS ALL CHANNELS)

# Warranty

Thank you for purchasing a Cerwin Vega Mobile product and we hope to provide you with countless hours of listening enjoyment.

Please take a brief moment to register your new product. By registering your new product, you will receive benefits such as:

- Important product notifications that may pertain to your purchase.
- Confirmation and record of ownership in case of loss or theft.
- Knowledgeable customer service and technical assistance pertaining to your product.

Register your new product by completely filling out this Product and Warranty Registration card or register online at [www.cerwinvegamobile.com](http://www.cerwinvegamobile.com).

Registration is voluntary and failure to register will not diminish your limited warranty rights.

## Limited Warranty (U.S.A.)

Cerwin Vega Mobile warrants all of our amplifiers and speakers to be free of defects in materials and workmanship for a period of one (1) year.

This warranty is non-transferable and applies only to the original purchaser from an authorized Cerwin Vega Mobile dealer. If service is required and necessary under this warranty due to manufacturing defect or malfunction, then Cerwin Vega Mobile will repair and/or replace defective product with either new or remanufactured like product at no charge at our discretion.

Damage to product caused by the following will not be covered under this warranty: abuse, accident, misuse, neglect, modifications, repairing attempts, seller/installer misrepresentation.

This warranty does not cover any incidental, consequential, or cosmetic damage due to accidents or normal wear and tear, nor does it cover the cost of removing or reinstallation of the product.

Warranty is void if the product's serial number has been removed, defaced, and/or tampered with.

## Warranty Procedure:

We recommend that you contact your Cerwin Vega Mobile authorized dealer where your original purchase was made to initiate all warranty claims. Our authorized dealers can guide you through the warranty procedure to ensure that your claim will be processed in a timely manner. All warranty returns must be accompanied with a proof of purchase (a copy of the original sales receipt) and be shipped freight prepaid to our facility with an RA (Return Authorization) number clearly marked on the outside of the package. Direct returns from consumers or non-authorized dealers will be refused if shipped without a valid RA number authorized by Cerwin Vega Mobile beforehand.

## INTERNATIONAL

Products purchased outside of the U.S.A. are covered only by that country's distributor and not by Cerwin Vega Mobile U.S.A.

Please Ship All Warranty Claims With Pre-Authorized RA Number To:

CV&DA Holdings, Inc.

ATTN: Customer Service Department

1225 E. 7th St.

Los Angeles, CA 90021 USA

Please Contact Customer Service for Further Warranty Information:

U.S.A.

Tel: 213-261-4161 / Fax: 213-947-4767



1225 E. 7<sup>th</sup> St. • Los Angeles, CA 90021 USA

P 213-261-4161 • F 213-947-4767

[WWW.CERWINVEGAMOBILE.COM](http://WWW.CERWINVEGAMOBILE.COM)

©2015 Cerwin-Vega Mobile. All rights reserved.  
(a division of CV & DA Holdings, Inc.)